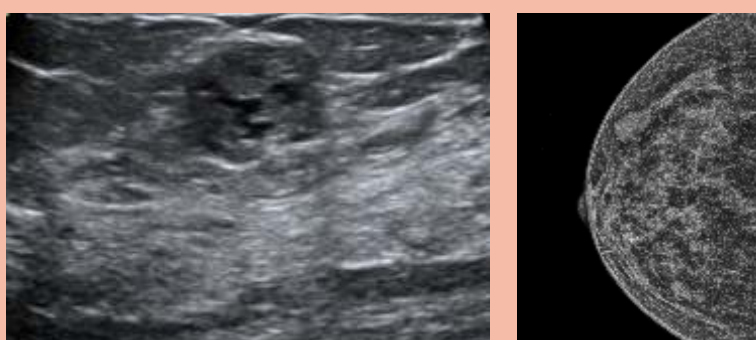
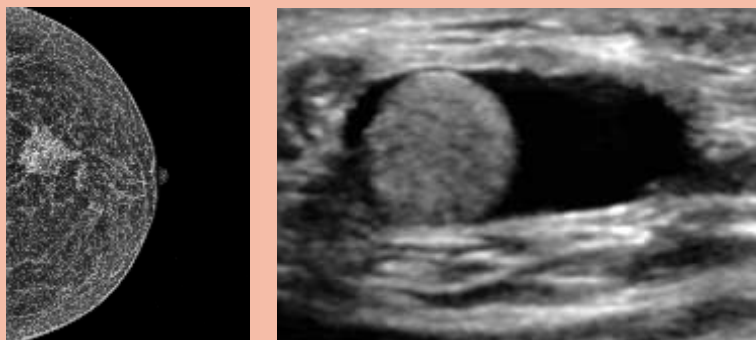
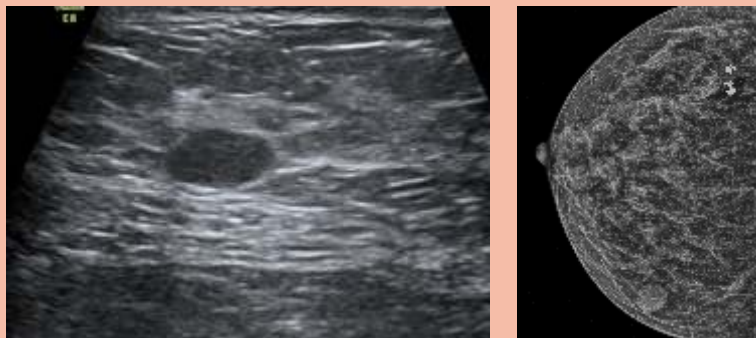
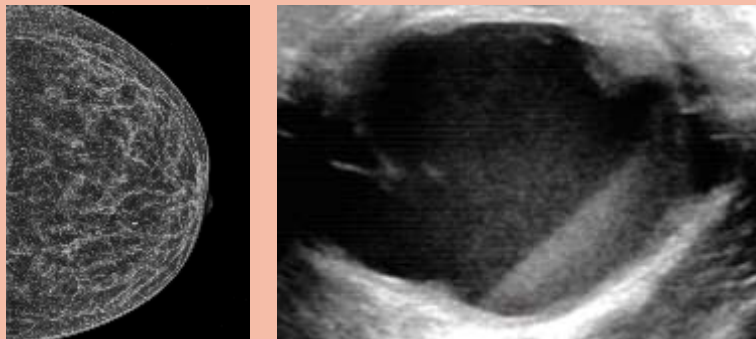
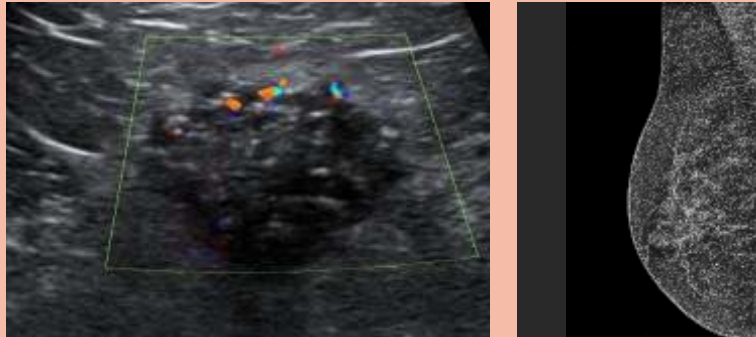


BREAST IMAGING

Training Programme

Mammography & Ultrasound



FEB-2022 Batch

Breast cancer is the leading cause of cancer death in women world-wide. Whether it is for screening or symptomatic disease, mammography & ultrasound are the primary diagnostic modalities for breast lesions. Because cancer is a grave diagnosis, diagnostic errors can be damaging. The job of a Radiologist is therefore critical.

Breast Radiologists need to be up to date with the current standards of breast imaging practice and reporting guidelines, so as to make accurate diagnosis. Patients also expect Radiologists to counsel them. The aim of ScholarMD Breast Imaging Training Programme is to develop these skill sets in Radiologists.

Major Areas of Training

- Mammography Physics
- Mammography Machine
- Mammography Technique
- Film Development & Printing
- Radiation control & BARC regulations
- Set-up of an Ideal Mammography Clinic
- Guidelines on Breast Examination and Screening
- Normal Anatomy of Breast
- BIRADS Classification
- Normal Mammography and Mammographic Characterisation of Breast Lesions
- Breast Ultrasound Protocol and Ultrasound Characterisation of Breast Lesions
- Benign Breast Calcification
- Malignant Breast Calcification
- Benign Breast Masses
- Malignant Breast Masses
- Breast Asymmetries
- Evaluation of Nipple Discharge
- Male Breast
- Breast Interventions
- Post-operative Breast
- Role of MRI in Breast Lesions

Highlights of the Programme

- High quality teaching by best faculty members who are leaders in the subject
- Specially designed curriculum by the faculty group
- Comprehensive coverage of breast lesions, with focus on areas required in day to day practice.
- Guidance on how to report on specific breast lesions
- Interactive teaching to resolve students' queries
- Specially created logbook for thorough understanding

Mode of the Programme

The lecture modules will be conducted online over 3 Sundays. Approximately 6-7 hours per day of teaching (total about 18-20 hours). In addition to lectures, there will be online logbook submission. The students will be given relevant reference articles.

Faculty



Programme Details

- Module 1: 13 February 2022 | 9 am to 2 pm
- Module 2: 20 February 2022 | 9 am to 2 pm
- Module 3: 27 February 2022 | 9 am to 2 pm

Because this is an interactive training programme, it is live only. No recordings.

Admission

- Limited number of seats only. First come first serve
- Admissions will be closed as soon as the seats are full or on 7th February 2022, whichever is earlier
- Pay the fees via NEFT / IMPS / UPI and then fill the Google form
- Tap here for the [Google Form link](#)
- Filling the details in Google Form correctly is mandatory to receive the Zoom link
- The form is also available on our website www.scholarmd.in
- For any queries, WhatsApp / Call 98191 30789

Fees and Payment

Rs. 5,900/- (Inclusive of 18% GST)

Name: **SCHOLARMD EDVENT LLP**
Bank: **Kotak Mahindra Bank Ltd.**
Branch: **Kalyani Nagar, Pune**

Account number: **0612159455**
Account type: **Current**
IFSC Code: **KKBK0001758**